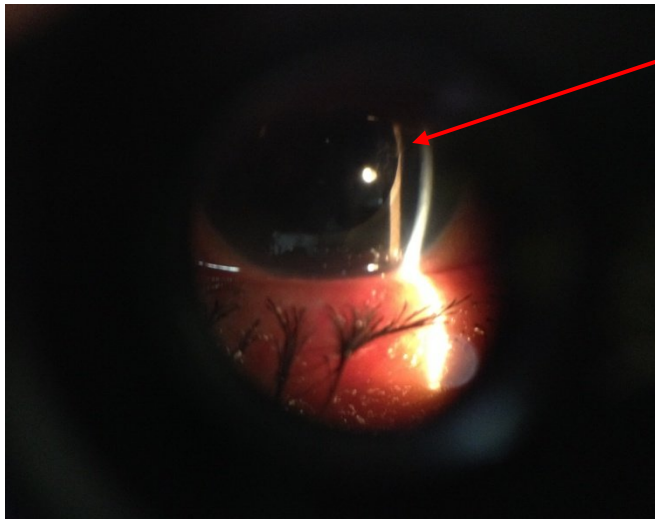


Management of Aniridia with Aphakia

Dr. Taskin Khan, Dr. Wasim

Aniridia is a condition where normal Iris tissue is absent. It can be congenital or traumatic. Its absence causes excessive glare due to large amount of light reaching the eye. Aphakia or absence of normal crystalline lens from its anatomical position results in decrease in patient's visual acuity which is normally treated by implanting an artificial lens (intraocular lens implant).

Here, we successfully treated a patient of traumatic aniridia with aphakia by implanting a special type of an aniridia implant placed in ciliary sulcus. The implant looks like a normal Iris though it is artificial with a pigmented periphery to cut-off extra light rays and central clear optical lens to correct the patient's vision.



First postoperative day of a case of traumatic aniridia with aphakia, managed with an aniridia implant.



An Aniridia Implant